



KORUMBURRA SKATE PARK

CONCEPT DESIGN REPORT

SOUTH GIPPSLAND SHIRE COUNCIL

MAY 2020

CONVIC


PREPARED BY

CONVIC

FOR



REVISION HISTORY

REVISION	REVISION DATE	DETAILS	AUTHORISED	
			NAME / POSITION	SIGNATURE
A	22.05.2020	CONCEPT DESIGN REPORT	BRYCE HINTON / Design Manager	

© CONVIC Pty Ltd. All rights reserved.

CONVIC has prepared this document for the sole use of the Client and for a specific purpose, each as expressly stated in the document. No other party should rely on this document without the prior written consent of CONVIC. CONVIC undertakes no duty, nor accepts any responsibility, to any third party who may rely upon or use this document. This document has been prepared based on the Client's description of its requirements and CONVIC's experience, having regard to assumptions that CONVIC can reasonably be expected to make in accordance with sound professional principles. CONVIC may also have relied upon information provided by the Client and other third parties to prepare this document, some of which may not have been verified. Subject to the above conditions, this document may be transmitted, reproduced or disseminated only in its entirety.

CONTENTS

INTRODUCTION	03
SITE ANALYSIS	04
CONCEPTUAL PROGRESSION	05
DESIGN PROPOSAL	06
FACILITY OVERVIEW	07
SKATE FEATURE PALETTE	09
NEXT STEPS	10

INTRODUCTION

This report outlines the development of the conceptual design for the Korumburra Skate Park. Located adjacent the Korumburra Train Station the design has been developed to suit the new location, the sites opportunities and constraints and after review of the previously undertaken concept design process.

The Korumburra Skate Park aims to create a local level facility catering to the needs of young people living within the localised Korumburra catchment and will form part of the broader network of skate parks within the region, attracting users from the greater South Gippsland Shire area.

The following report explains the approach and principles utilised to create a comprehensive design response.



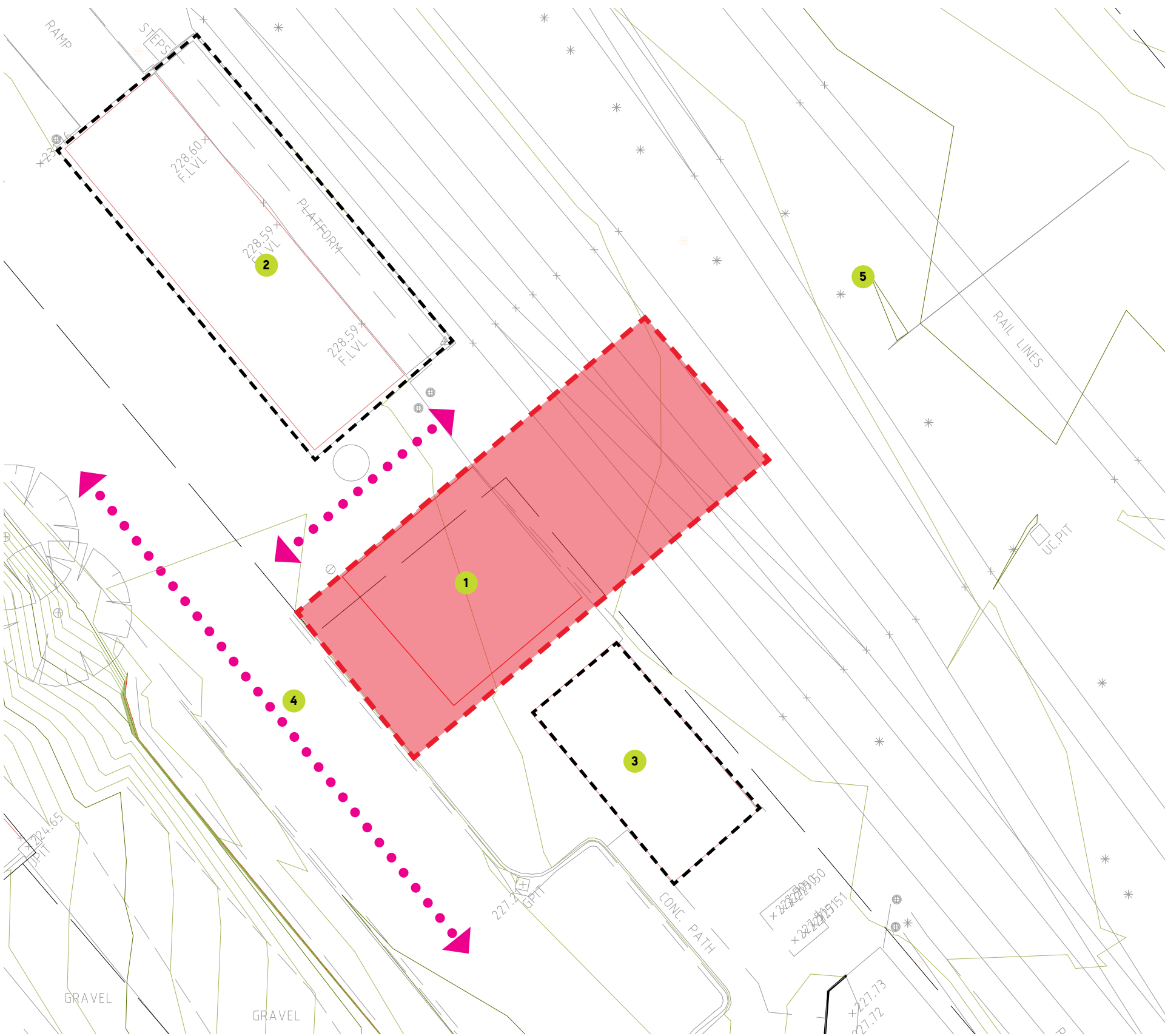
**VISION | THE KORUMBURRA SKATE PARK
WILL PROVIDE A LOW LEVEL STREET PLAZA
STYLE FACILITY CATERING TO BEGINNER AND
INTERMEDIATE SKILL LEVELS. THE COMMUNITY
SPACE WILL OFFER A CONTEMPORARY SKATE
FACILITY FOR THE LOCAL AND REGIONAL
COMMUNITY.**

SITE CONTEXT

The site selected for the Korumburra skate park is located adjacent the Korumburra Train Station. The site is predominantly level with minor level change between the existing road and parcel of land to be developed. The existing playground located within the site will be removed to allow an increase in developable land available for the skate facility.

The space allocated for the skate park will form a part of a broader community space including shelter, picnic seating and toilets. Light traffic and car parking space runs directly adjacent the southwest edge of the site. Nestled between two buildings the skate park area is bordered by a goods shed to the north, and a large shelter and seating area to the east. The skate park footprint will partially extend into train station area to the north to allow for an increase in functionality.

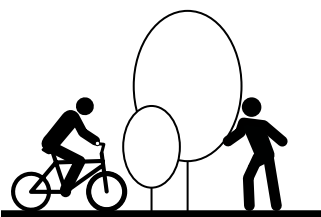
Overall, the allocated skate park area is bordered on all edges by built form in close proximity. The development of the skate park will need to consider passive surveillance and connectivity.



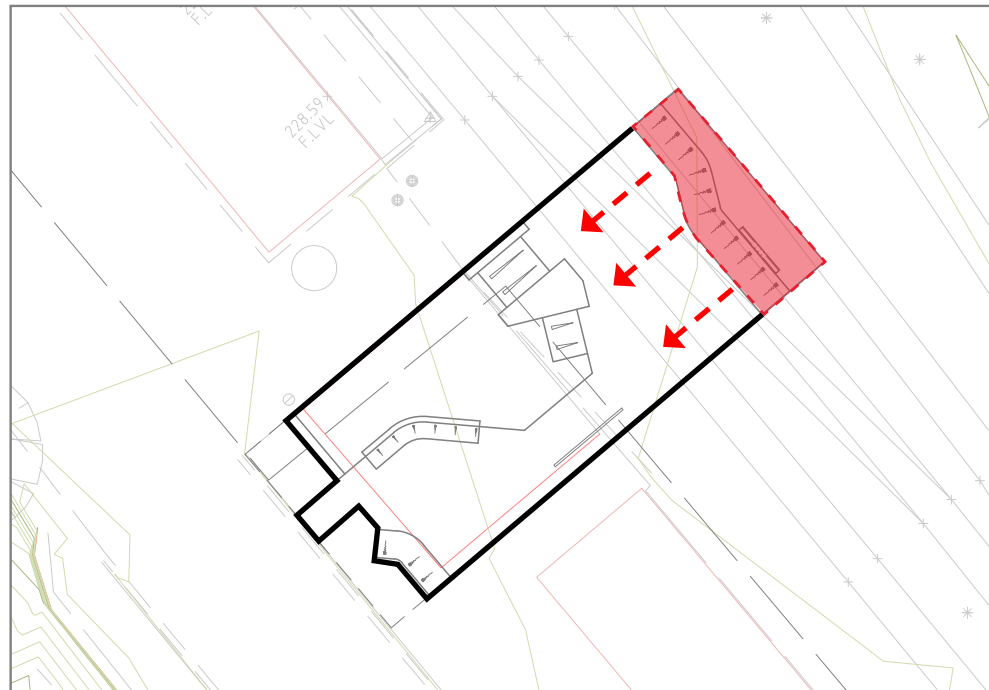
SITE FEATURES

- 1 Existing playground
- 2 Goods shed
- 3 Existing shelter and seating
- 4 Road and carpark area
- 5 Train station area

- Traffic routes
- Proposed skate park area

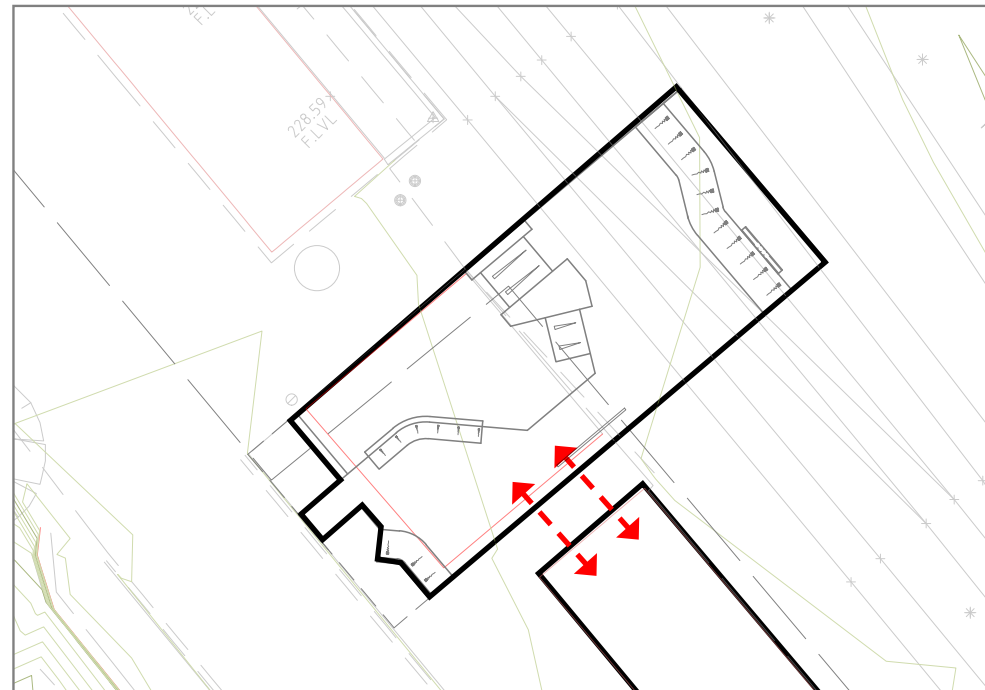


CONCEPTUAL PROGRESSION



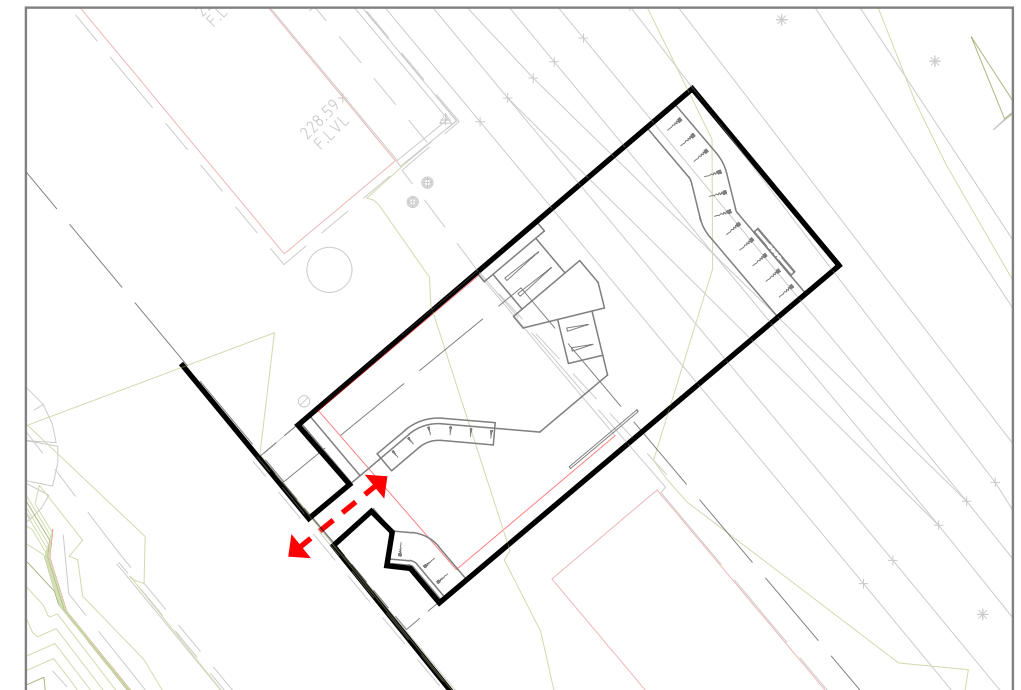
NORTH RETURN PLATFORM

The main return feature has been positioned to the north edge of the skate park to ensure platform heights do not obstruct views into the facility from the adjacent roads and pedestrian access.



SHELTER CONNECTION

The east edge has been developed to align with the existing ground levels and clear of major obstacles allowing an open connection between the skate park and shelter area.



ROAD ENTRY BUFFER

The south edge of the skate park has been offset from the road with a vegetation buffer. A fencing treatment will be reinstated to provide a degree of safety for users while maintaining transparency and enhanced passive surveillance into the site.

DESIGN PROPOSAL

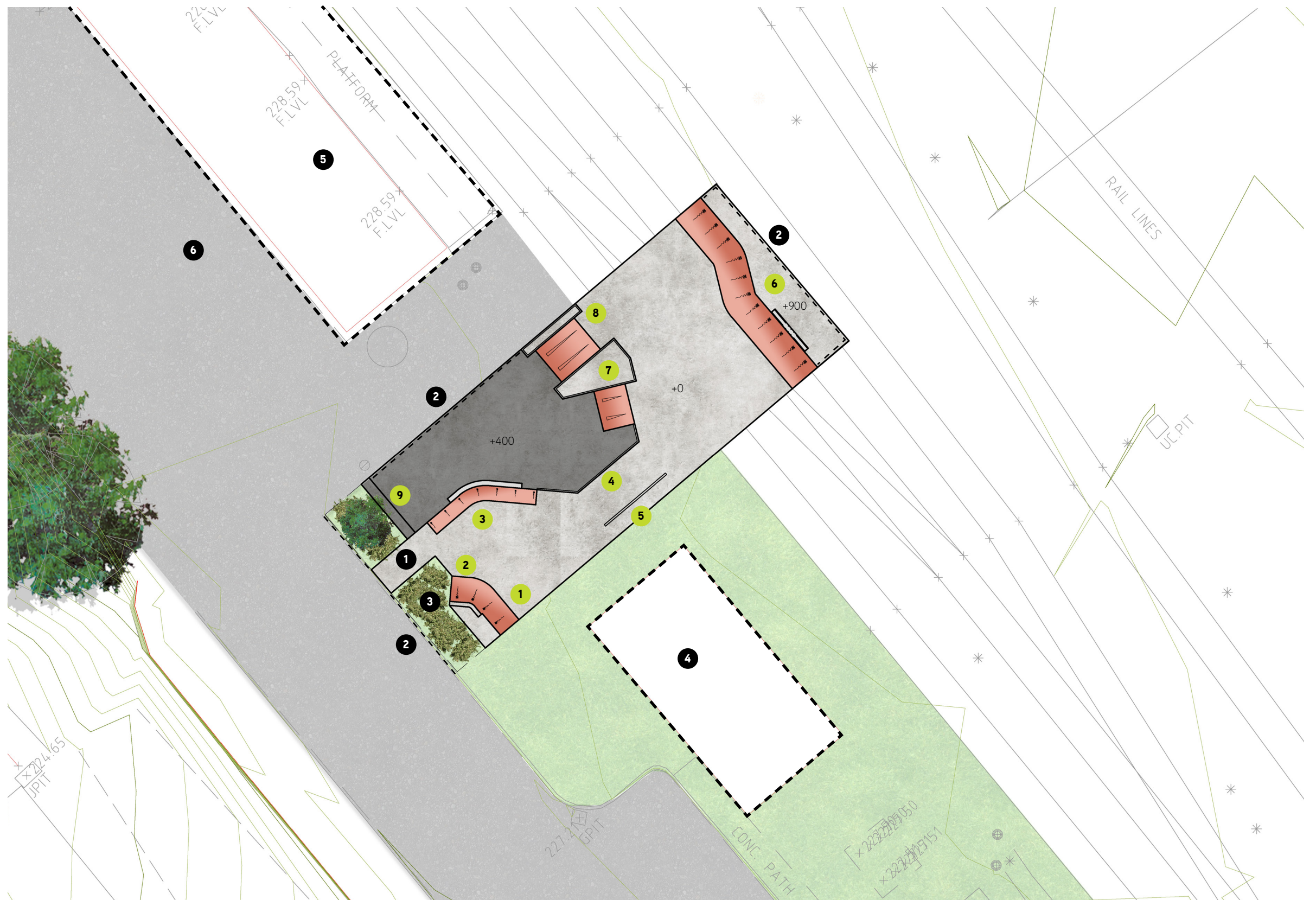
LEGEND

SKATE WORKS

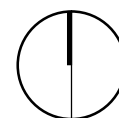
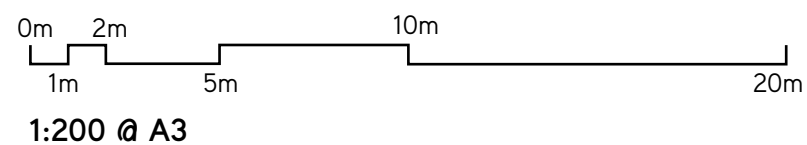
- 1 750H Quarter pipe
- 2 900H Quarter pipe
- 3 400H Bank with kerb
- 4 400H Ledge
- 5 400H Flat bar
- 6 900H Quarter with kerb
- 7 200H Out manual pad
- 8 450H Sloped hubba
- 9 Seating block

LANDSCAPE WORKS

- 1 Entry pathway
- 2 Balustrading
- 3 Low level shrub planting
- 4 Existing Shelter
- 5 Existing goods shed
- 6 Existing car parking



CLIENT



CONVIC

Unit 13, 46-50 Regent Street
Richmond VIC 3121
T (03) 9486 9899
Convic.com

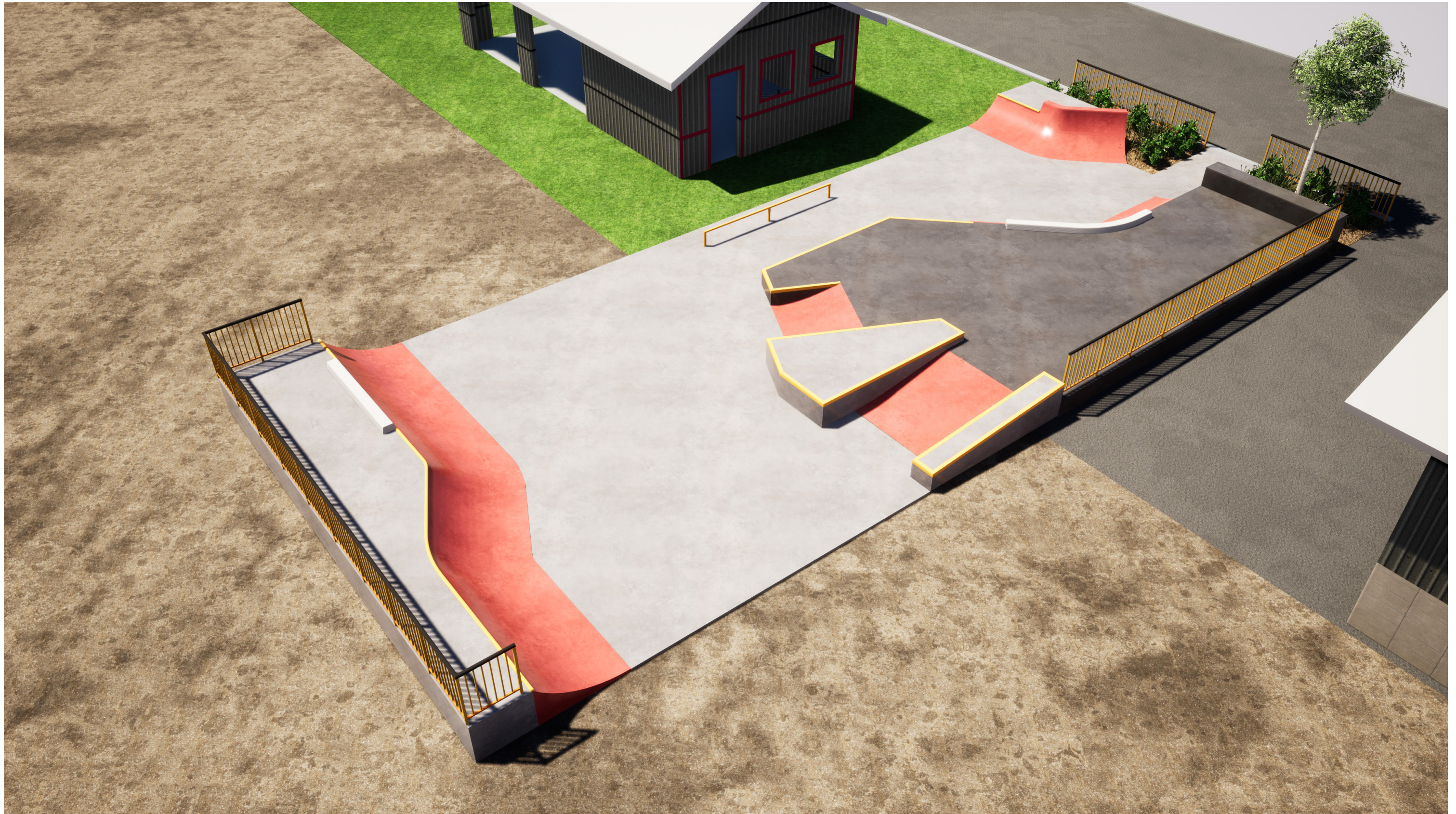
PROJECT
KORUMBURRA SKATE
PARK
TITLE
CONCEPT PLAN

DATE
22.05.2020
REVISION
A

FACILITY OVERVIEW



FACILITY OVERVIEW



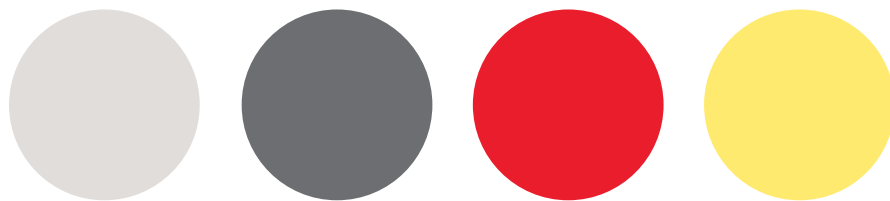
SKATE FEATURE PALETTE

SKATE REFERENCE IMAGES

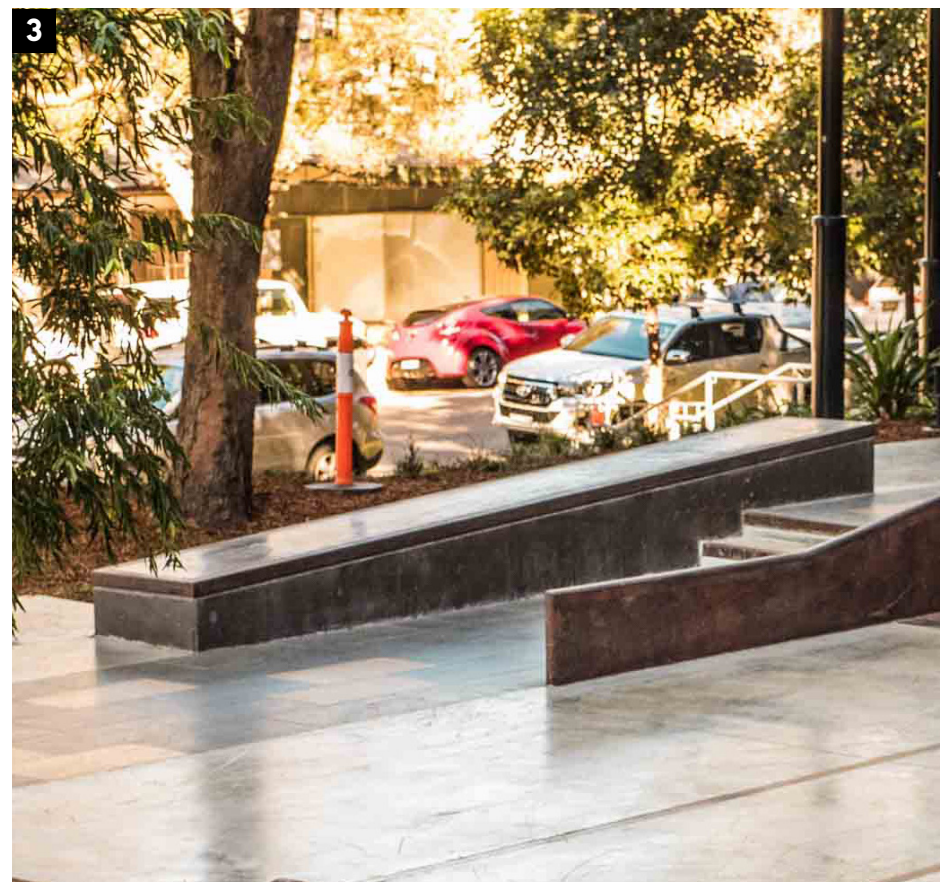
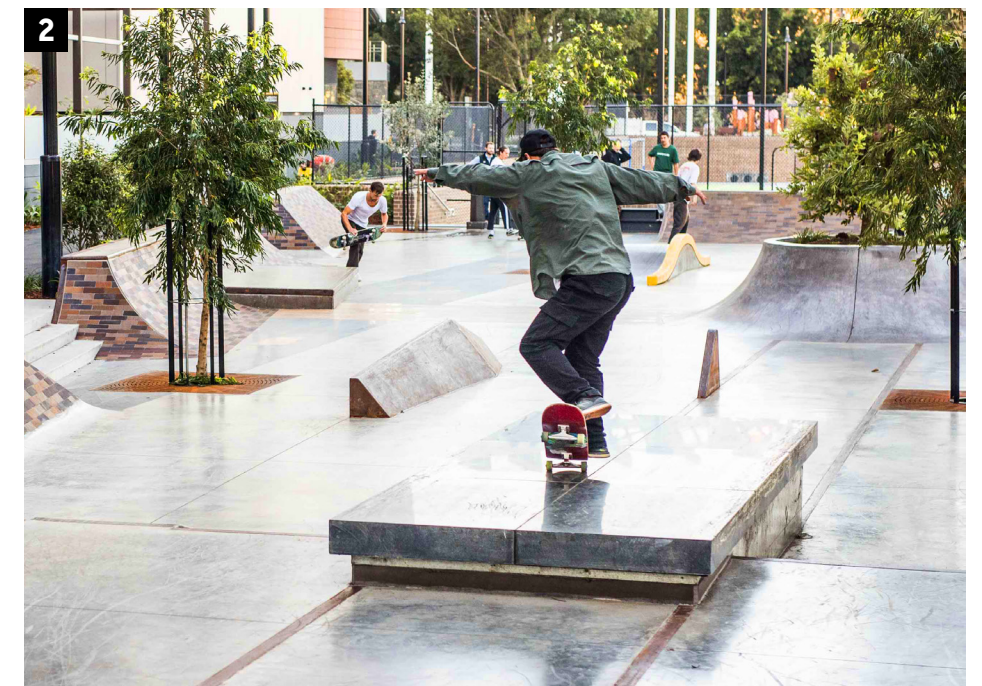
Skate obstacles have been designed to create a unique rider experience with features that are multifunctional and can be used in a variety of ways.

1. Quarter with kerb
2. Manual pad
3. Slopped hubba
4. Flat rail

COLOUR PALETTE



COLOURED CONCRETE + HIGHLIGHTS



MOVING FORWARD

Once the South Gippsland Shire Council has approved the concept design report, Convic will undertake detailed design documentation of the facility. This documentation will then lead to the construction of the Korumburra Skate Park.



AUSTRALIA

UNIT 13, 46-50 REGENT STREET
RICHMOND VIC 3121 AUSTRALIA
T +61 3 9486 9899 F +61 3 9486 9088

MELBOURNE | SINGAPORE | DUBAI

CONVIC.COM